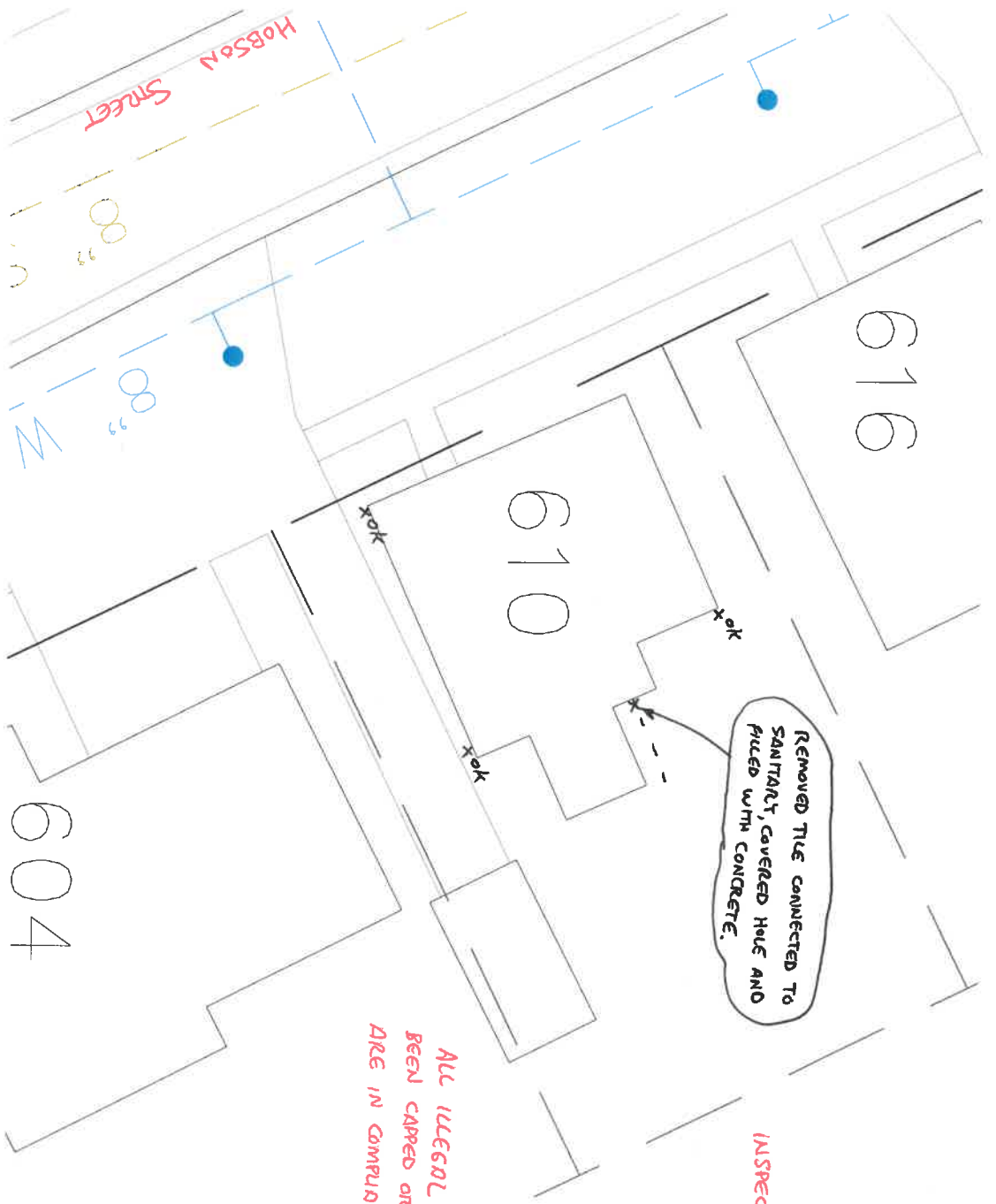


610 HOBBSON STREET
ILLEGAL DOWNSPOUT INVESTIGATION



REMOVED TILE CONNECTED TO
SANITARY, COVERED HOLE AND
FILLED WITH CONCRETE.



INSPECTED BY: MARK SPIESS

ALL ILLEGAL CONNECTIONS HAVE
BEEN CAPPED OR PUGHED AND
ARE IN COMPLIANCE AT THIS TIME.